



# TNT CRANE & RIGGING EQUIPMENT FOR SALE

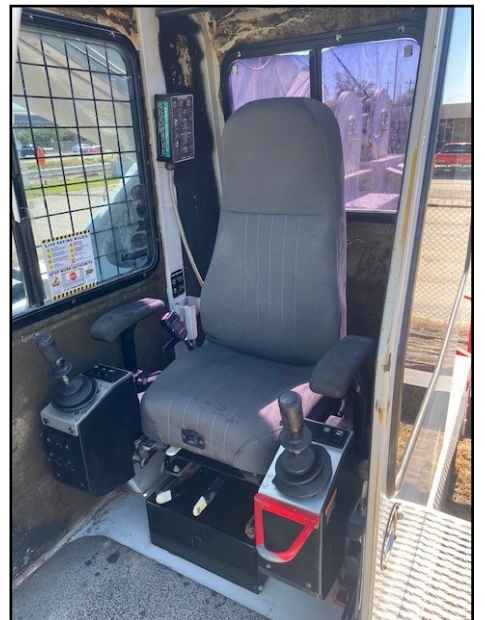
## Link Belt Model HTC 8660 - 60 Ton Telescopic Boom Truck Crane



<b>Year</b>	2008	<b>Engine</b>	CAT C13
<b>Boom</b>	35.5' - 110' (4 sections)	<b>Winches</b>	Main & Auxiliary
<b>Jib</b>	34' - 56' (stowable, offsetable to 2°, 20° or 40°) 2 piece bi-fold	<b>Hours &amp; Carrier Miles</b>	17,011 hours 152,423 miles (as of May 2022)
<b>Counterweight</b>	12,000 lbs. (3 pieces)	<b>Dimensions</b>	46'7" L, 11'5.38" H, 8'6" W
<b>Blocks</b>	60 ton, 5 Sheave Quick Reeve Block 8.5-ton Ball	<b>Tires</b>	Front 425 65R 22.5 (x4) Rear 11R 22.5 (x8)
<b>Additional Information</b>	Hour meter was replaced 3/14/18 at 14,664 hours and 148,267 miles. Hours and miles stated above are current added to these values.		

**CONTACT— Kevin Lawson at (903) 220-8900 or [klawson@tntcrane.com](mailto:klawson@tntcrane.com)**

# Link Belt Model HTC 8660 - 60 Ton Telescopic Boom Truck Crane



**CONTACT— Kevin Lawson at (903) 220-8900 or [klawson@tntcrane.com](mailto:klawson@tntcrane.com)**